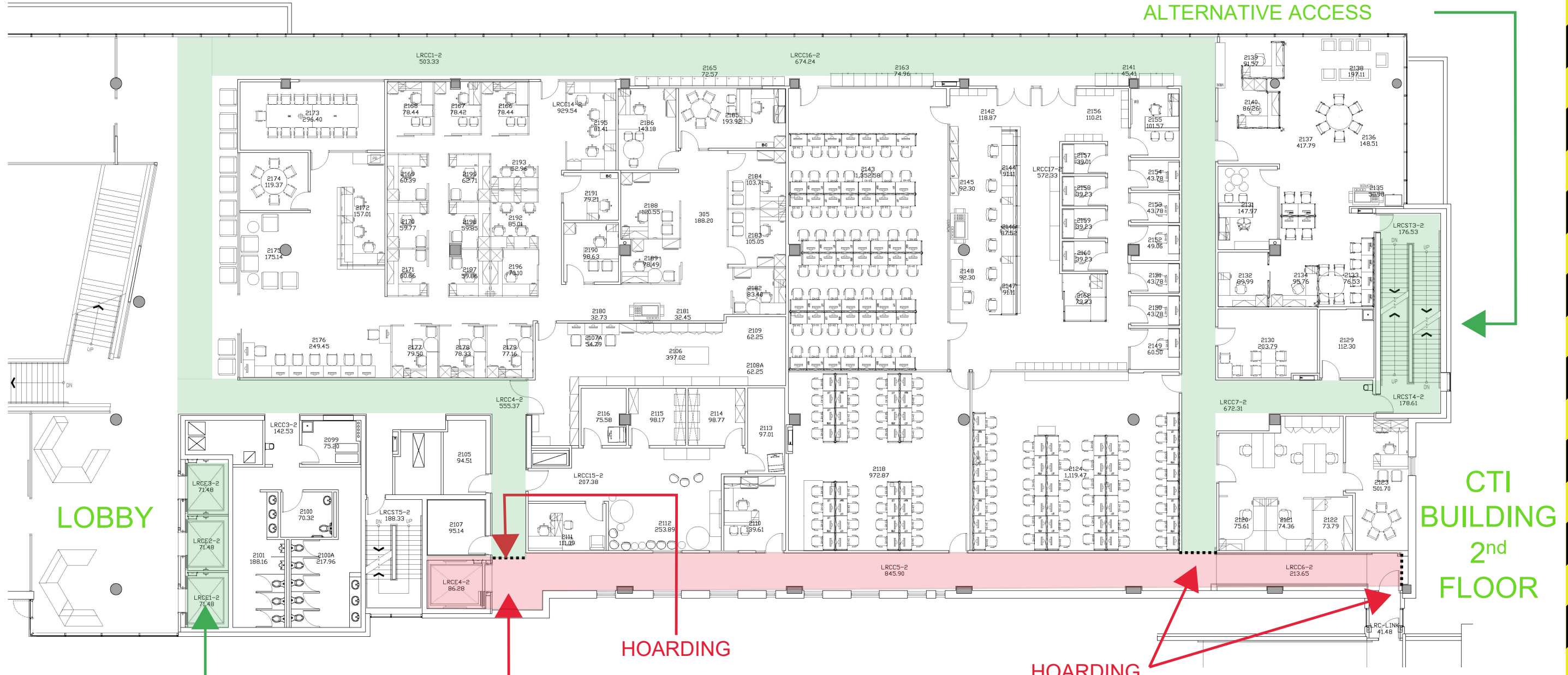


**UNDER CONSTRUCTION**

**AREA CLOSURE - FROM JULY 10 TO AUGUST 18**

**LRC BUILDING 2<sup>nd</sup> FLOOR**

HALLWAY TO CLASSROOMS & EAST STAIRWELL REMAIN OPEN FOR ALTERNATIVE ACCESS



ELEVATORS REMAIN OPEN FOR ALTERNATIVE

THIS AREA IS CLOSED FOR CONSTRUCTION PLEASE DO NOT USE SERVICE ELEVATOR ON THE 2<sup>nd</sup> FLOOR

HOARDING

CTI BUILDING 2<sup>nd</sup> FLOOR