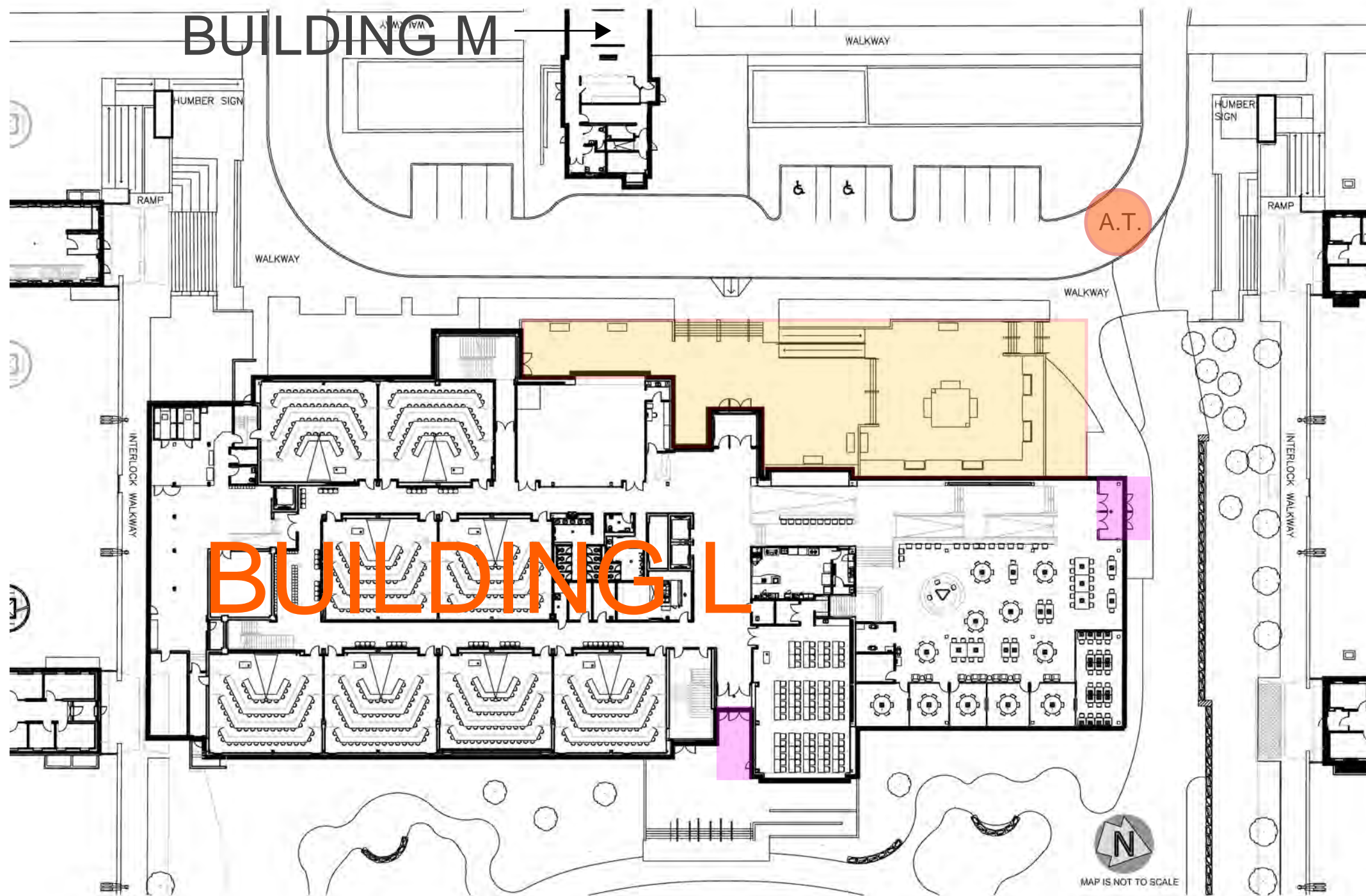


**UNDER CONSTRUCTION**

**AREA CLOSURE - FOR JULY 7<sup>TH</sup> - AUGUST 22<sup>ND</sup> 2025**



**LEGEND**

 CONSTRUCTION AREA  
WEST MAIN ENTRANCE CLOSED

 A.T. TRANSIT (ACCESSIBLE)  
PICK-UP / DROP-OFF

 FIRST FLOOR, ACCESSIBLE  
ENTRANCES / EXITS