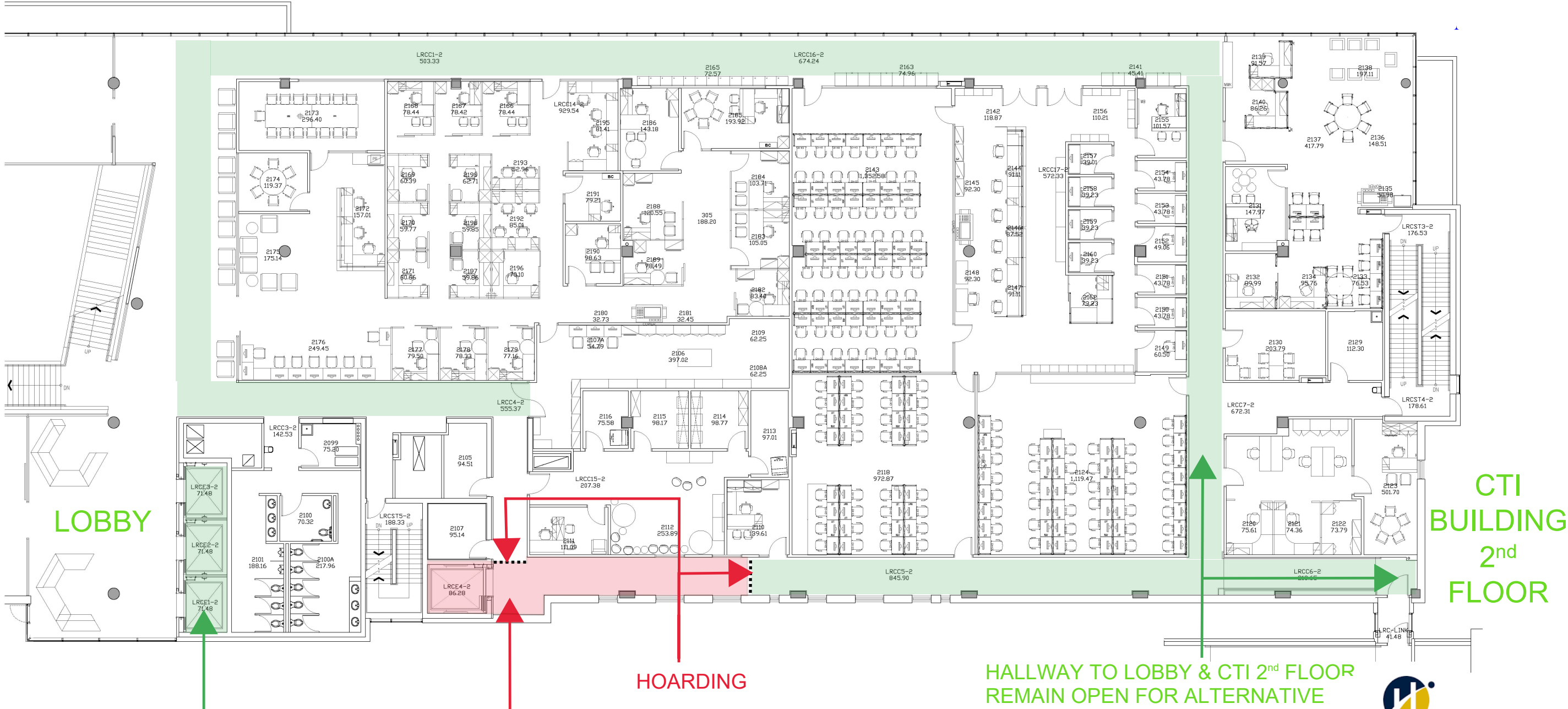


**UNDER CONSTRUCTION**

**AREA CLOSURE - FROM JUNE 19 TO JULY 6, 2023**

**LRC BUILDING 2<sup>nd</sup> FLOOR**



**LOBBY**

**CTI BUILDING 2<sup>nd</sup> FLOOR**

**HOARDING**

**HALLWAY TO LOBBY & CTI 2<sup>nd</sup> FLOOR REMAIN OPEN FOR ALTERNATIVE**

**ELEVATORS REMAIN OPEN FOR ALTERNATIVE**

**THIS AREA IS CLOSED FOR CONSTRUCTION PLEASE DO NOT USE SERVICE ELEVATOR TO ENTER OR EXIT 2<sup>nd</sup> FLOOR.**



**HUMBER**

Capital Development & Facilities Management  
Branislav J. ext 4787