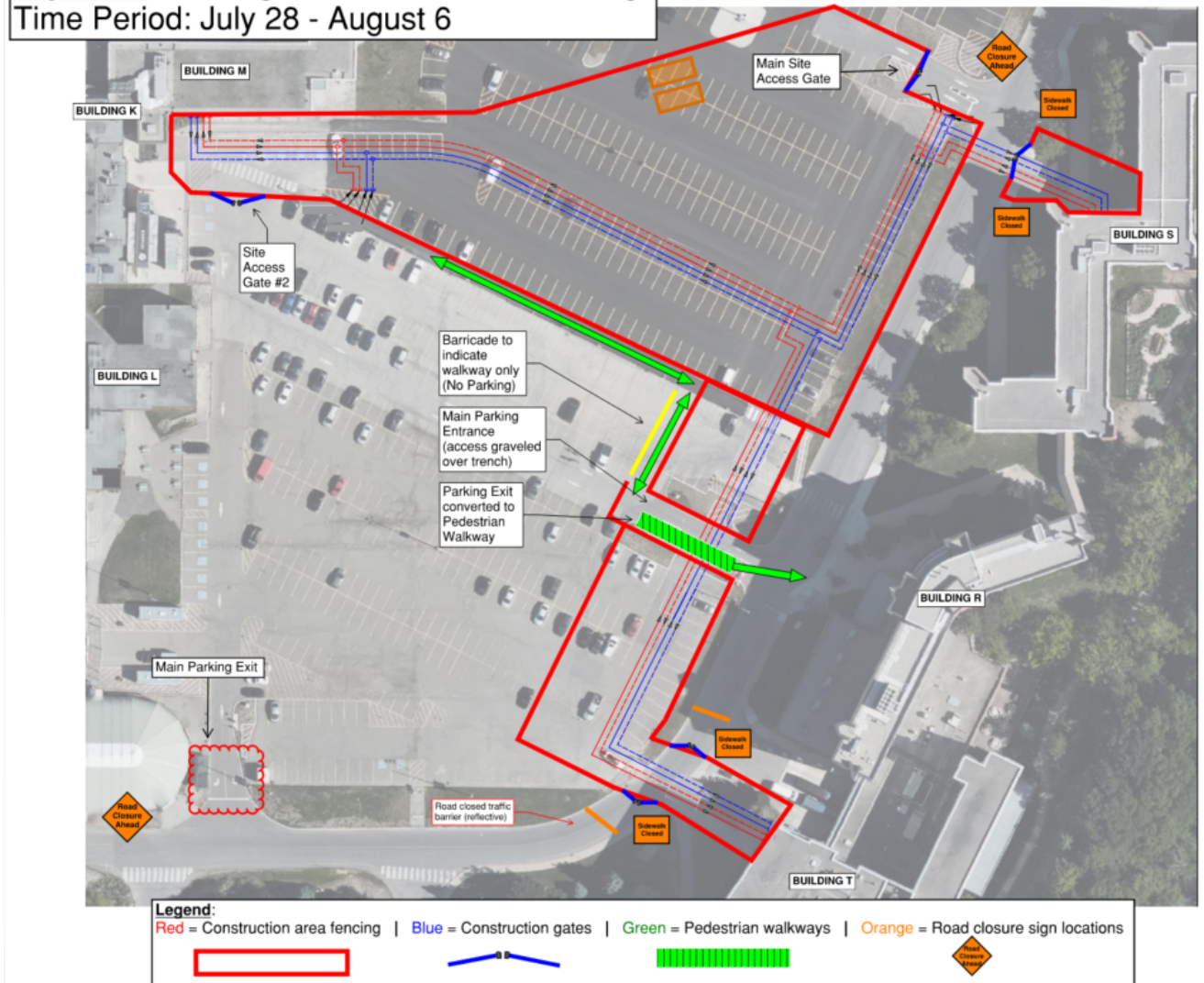


Notice Arboretum Road Closure at T building - North Campus

When: 10:00 AM Monday, July 28th until 5:00 PM Wednesday Aug 6th, 2025

As part of the SWITCH project the **Arboretum Road will be closed at T building** next Monday July 28th, at 10:00 AM. The closure will last up to 5:00PM on Wednesday August 6th. Please see the map below for the layout of signage and the closure.

Layout #4: Parking Lot Closures - T Crossing
Time Period: July 28 - August 6



Purpose: To connect the residence building R & T to the district system as part of the SWITCH project.

- **Impact on Occupants:** The road will be closed to through traffic. Access to the residence buildings, including the loading dock, will not be impacted. The east



gate will remain open for access to Lot 1, and the south gate will be used for exiting.

Thank you for your understanding and cooperation as we work to enhance our campus infrastructure.

For more information or if you have questions, please contact Hooman Aboutalebi, Senior Project Manager, Hooman.Aboutalebi@humber.ca.