

Teaching Innovation Fund

What's Included:

- ✓ Up to \$1,400.00 per investigator to conduct a project focused on a teaching and learning research question
- ✓ A SoTL workbook to guide faculty through the research process
- ✓ Ongoing guidance and support from the CTL, from research design through to data collection and analysis
- ✓ Peer mentorship and support throughout the research process, through a Community of Practice

Application Process

Download the application

All you need is a research idea and a commitment to attend two 2-hour proposal development workshops.

Talk to your Dean or Associate Dean about your idea, and ask them to sign your form

Submit the completed form to CTLResearch@humber.ca



Eligibility:

All Faculty (full-time; part-time; partial load) are eligible to apply for the fund.

Faculty may apply jointly to share a combined, larger amount for a collaborative project.

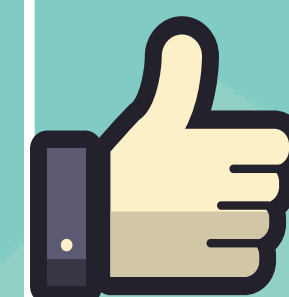
The fund CANNOT support research that contributes directly to credentials.

Faculty that complete research through the fund get priority of application for the scholarly writing boot camps and presenting their research at teaching and learning conferences

Expectations of Fund Holders

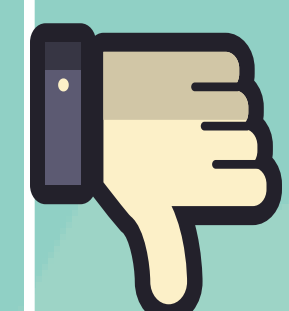
- ✓ Attend two proposal development workshops, where you will put together your research plan with consultation and feedback from CTL staff and peers.
- ✓ Submit a proposal, complete any suggested revisions, and submit a final proposal.
- ✓ Apply for approval from the Humber Research Ethics Board (REB) for research involving human participants, where applicable.
- ✓ Attend celebratory lunch and a one-on-one data coaching session
- ✓ Submit a final report - either a presentation at Showcase or a brief written report.

Eligible Expenses



Software License
Research Assistant
Educational Tool or Equipment
Research Participant Incentives
Research Instrument (e.g., survey)
Transcription service

Ineligible Expenses



Meals
Travel
Course Release Time
Faculty Remuneration
Professional Membership or Subscription
Computer Hardware (unless specifically required for the research)

Questions? Contact CTLResearch@humber.ca